

State of Wyoming Corner Record

(In compliance with the CORNER PERPETUATION AND FILING ACT, Wyoming Statutes, 1977, Section 36-11-101, et. seq., and the Rules and Regulations of the Board of Registration for Professional Engineers and Professional Land Surveyors.)

Reverse side of this form may be used if more space is needed.

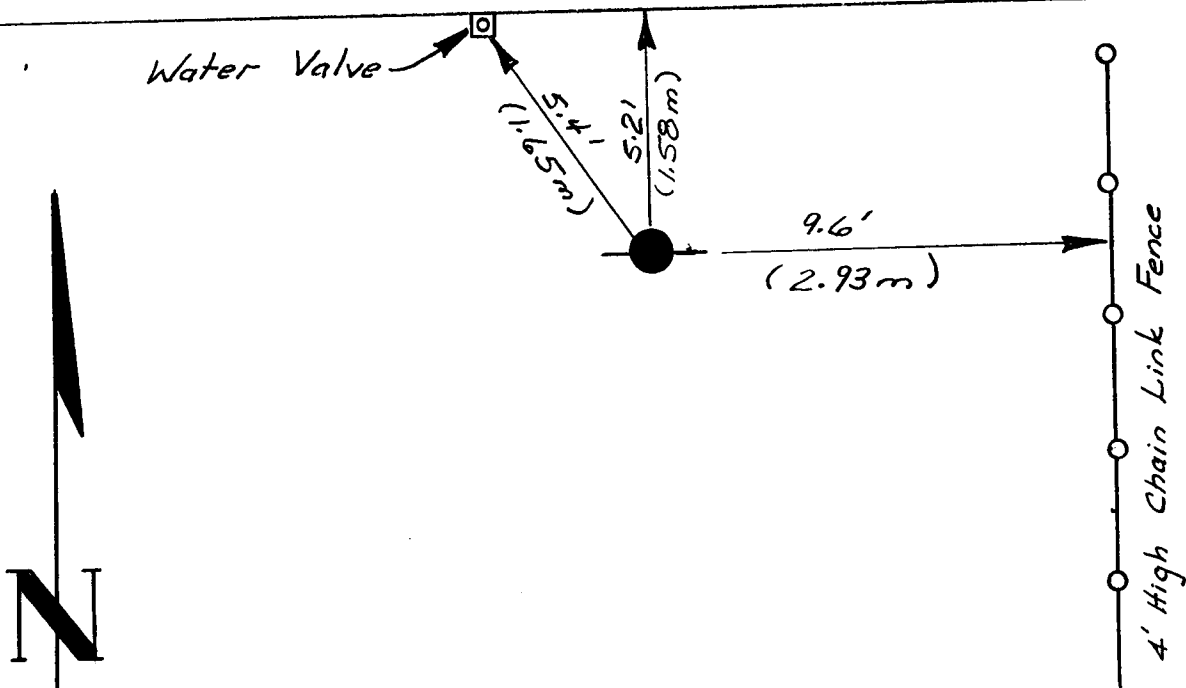
Record of original survey and citation of source of historical information (if corner is lost or obliterated). Description of corner monumentation evidence found and/or monument and accessories established to perpetuate the location of this corner. Sketch of relative location of monument, accessories, and reference points with course and distance to adjacent corner(s) (if determined in this survey). Method and rationale for reestablishment of lost or obliterated corner.

Note: This corner record does not supersede the corner record prepared and filed by Rick L. Hudson, P.L.S. No. 519, filed in the Laramie County Clerk's Office on 19 November 1973; but provides additional reference information concerning the location of the survey monument. The monument described in the reference corner record prepared by Mr. R.L. Hudson, P.L.S., was found in good condition.

PERSHING BOULEVARD

↖ Curb

Sidewalk



1995 APR - 7 PM 4: 00

LARAMIE COUNTY CLERK
CHEYENNE, WY

RECEIVED
1603320

Note: Monument is located under the southwest side of a six foot high bush, and is about 0.10 foot below the surface of the lawn.

Not drawn to scale.

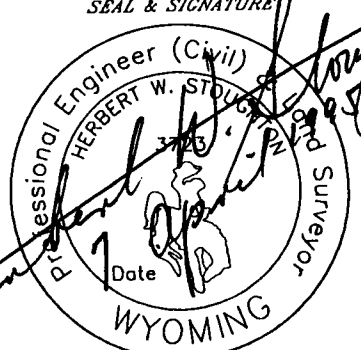
Date of Field Work: 28 III 1995 Office Reference: Eastridge Heights

CROSS INDEX DIAGRAM

A	1	2	3	4	5	6	7	8	9	10	11	12	13	14	15	16	17	18	19	20	21	22	23	24	25
B																									
C	6					5																			
D																									
E																									
F																									
G	7					8																			
H																									
I																									
J																									
K																									
L	18					17																			
M																									
N																									
O																									
P																									
Q																									
R																									
S																									
T																									
U																									
V																									
W																									
X																									
Y																									
Z																									

Firm/Agency, Address
 PREPARED BY:
HERBERT W. STODOLSON, P.E.
 GEODESIC ENGINEER
 2821 OAKEN AVENUE
 CHEYENNE, WYOMING 82001
 (307) 632-7460

This corner record was prepared by me or under my direction and supervision.



Corner Name: 1/4 Section 29-38 Section: 29 T. 14N R. 66W 6th P.M. Cross-Index No.: V-7
 SBRPEPLS/PLSW: March 1994 (CLCR_SJA)